

Eastern Missouri Psychiatry

Newsletter of the Eastern Missouri Psychiatric Society (EMPS)

*** A District Branch of the American Psychiatric Association ***

Psychologist Prescribing Bills Defeated in Missouri

By Rebecca DeFilippo, EMPS Executive Director

Two bills aimed at allowing non-medically trained psychologists to prescribe medications in the State of Missouri failed to pass during the 2008 legislative session.

The Missouri General Assembly adjourned on Friday, May 16, without acting on either Senate Bill 917 (Goodman R-29) or House Bill 1739 (Moore R-20). The identical bills, commonly referred to as RxP legislation, would have created a new category of "prescribing psychologists."

If passed, the bills would have licensed psychologists to write prescriptions for psychotropic and other brain medications after completing some courses that met training requirements set by a state committee of psychologists, not the Missouri State Board of Registration for the Healing Arts.

Further, a committee whose members had no medical training and who could not themselves prescribe would have written regulations for training to prescribe and to determine who was qualified to prescribe.

Under provisions in both the House and Senate bills, a "prescribing psychologist" would have been able to prescribe such powerful medications as antipsychotics to treat schizophrenia, Ritalin and other stimulants used in children with ADHD, cognitive enhancers such as Aricept to treat Alzheimer's disease, and anticonvulsants often prescribed for bipolar disorder.

Licensing requirements under both bills included completion of a 10-week course, passing a national examination, and physician supervision for only one year.

The three APA district branches in Missouri worked closely with the APA to oppose the bills. Psychiatric physicians from Central, Eastern and Western Missouri Psychiatric Societies testified at House and Senate committee hearings in February.

On February 4, then-APA President Carolyn B. Robinowitz MD testified on SB 917 before the Senate Financial,

continued on page 11.



Three St. Louis Researchers Appointed to DSM-V Workgroups

On May 1st, 2008 the APA announced the names of the work group members who will guide the development of the fifth edition of APA's Diagnostic and Statistical Manual of Mental Disorders (DSM-V), which is scheduled to be published in 2012. More than 120 names were announced as members of 13 workgroups, and the list includes world-renowned scientific researchers and clinicians. The work group members would examine the extent to which new research warrants modifying the current organization of disorders, descriptions of disorders, and the criteria for diagnosis. From St. Louis, three high-profile researchers had been included on the DSM-V workgroups: Dr. Richard Todd, Dr. Deanna Barch, and Dr. Kathleen Bucholz.

Richard Todd, Ph.D., M.D., who sadly passed way on August 22, 2008 (*see Obituaries, page 14*) was appointed to the "ADHD and Disruptive Behavior Disorders Work Group". Dr. Todd was the Blanche F. Ittleson Professor of Psychiatry and Professor of Genetics at Washington University. He was also the Director of the Division of Child Psychiatry at Washington University. Dr. Todd's research included genetic linkage and genome wide association approaches applied to familial forms of ADHD, affective disorders and alcoholism.

Deanna Barch, Ph.D., was appointed to the "Psychotic Disorders Work Group". Dr. Barch is Professor of Psychology, Psychiatry and Radiology at Washington University, and is also director of the Conte Center for the Neuroscience of Mental Disorders and co-director of the Cognitive Control and Psychopathology Laboratory. Dr. Barch research includes functional neuroimaging and studying neurobiology of cognitive, language n emotional deficits in schizophrenia.

Kathleen Bucholz, Ph.D. will serve on the "Substance-Related Disorders Work Group". Dr. Bucholz is Professor of Epidemiology and Psychiatry at Washington University. Her research involves epidemiologic studies of alcohol and drug related problems and dependence using general population, family and twin samples.

Features:

EMPS Officers Elected.....	3
Access to Care Strategy Meeting in MO.....	3
Psychiatry Advocacy in MO.....	5
MO Political Action Cmte.....	7
New/Outgoing Residents.....	9
EMPS Membership Update....	11
West End Place Update.....	12
Obituaries.....	14
EMPS Committees	15

The President's Column**We Must Advocate for Our Patients**

By Daniel Mamah, MD, MPE,
EMPS President

As psychiatric physicians, we care for patients with medical conditions that are among the most complex and prevalent. Nevertheless, we often face obstacles as we perform our primary duties when treating individuals with mental illnesses. A large proportion of Missouri's citizens lack good access to psychiatric care. Mental health resources and providers are not always available for those who need them and poor reimbursement rates limit psychiatric management. While these problems exist in the greater St. Louis area, many rural areas of the state experience significant access issues.

As leaders of the mental health treatment team, we must ensure that attempts to solve the problem of poor psychiatric access do not harm our patients. Last spring, two bills introduced in the Missouri legislature would have allowed clinical psychologists to expand their scope of practice to include prescribing powerful psychoactive substances after only minimal classroom training. Fortunately, for our patients, psychologist prescribing, or RxP, bills failed to pass (*see page 1*). However, the bills came closer to passing than ever before in the state's history. Lobbying efforts by EMPS and psychiatrists' testimony at hearings played a vital role in educating legislators about the negative consequences of passing these bills. We anticipate a renewed and re-energized effort to allow psychologists to prescribe when RxP proponents introduce new bills in January.

EMPS will continue to work for your patients, for you, and for the practice of psychiatry. Recently, we redesigned our Web site and increased how often we publish the Eastern Missouri Psychiatry newsletter, with a goal of quarterly issues. In March, EMPS organized an advocacy and media relations training session in Jefferson City and psychiatrists met with their respective legislators (*see page 5*). In July, psychiatrists again met in Jefferson City to begin discussions on strategies to improve access to psychiatric care in Missouri (*see page 3*). These discussions will

continue through periodic teleconferences. We also will take steps to form a statewide psychiatric political action committee, which would independently support legislators (*see page 7*).

EMPS is committed to a properly managed budget. Day-to-day operational expenses for the society include the services of a part-time executive director and a lobbyist on retainer, six to eight CME programs per year, membership mailings, and newsletter publications. EMPS derives its income from membership dues, advertising, exhibit fees, unrestricted educational grants, and other grants. In an effort to avoid conflicts of interest with the pharmaceutical industry, the EMPS Executive Council adopted a policy not to accept newsletter and Web site advertising that promotes specific medications. External sponsors may support our CME programs, but we do not allow sponsors to influence any aspect of educational programming. In June, EMPS submitted a competitive grant application to the APA, which, if funded, will support a major membership recruitment and retention campaign. Elements of the campaign will include a dues discount incentive targeted at increasing EMPS membership and special programs geared to residents and fellows. We also plan to submit a grant to support legislative education and advocacy efforts, through the APA's Committee on Advocacy and Litigation Funding (CALF) grant.

We value the efforts of EMPS members who have been active in the society over the years and appreciate those who have agreed to serve on various committees this year (*see page 15*). We expect 2009 to present an active legislative agenda. EMPS will benefit from your input and feedback as we move forward. Please contact me at (314) 362-6954 or mamahd@psychiatry.wustl.edu if you wish to share ideas or become more active in our efforts. I also encourage you to visit our Web site at www.emopsych.org for current information and psychiatric news updates.



1321 Montevale Court,
Fenton, MO 63026-3016

Phone: (636) 343-8555
Contact e-mail: rdefilippo@aol.com
Website: www.emopsych.org

OFFICERS 2008-2010*President*

Daniel Mamah, M.D., MPE

President-Elect

Jack Croughan, M.D.

Secretary/Treasurer

Susan A. Minchin, M.D., PhD

APA Assembly Representative

Garry M. Vickar, M.D.

Deputy APA Assembly Representative

Lawrence F. Kuhn, M.D.

Past President

Jay Meyer, M.D.

COMMITTEE CHAIRS*Bylaws*

Jo-Ellyn Ryall, M.D.

Child & Adolescent Psychiatry

OPEN

Community/Public Psychiatry

OPEN

Ethics

Lawrence F. Kuhn, M.D.

Legislative Affairs

Paul Simon, D.O.

Members-in-Training

Lauren Flynn, M.D.

Ben Holt, M.D.

Membership

Jo-Ellyn Ryall, M.D.

Newsletter

Daniel Mamah, M.D, MPE

Programs/Education

Arturo Taca, Jr., M.D.

Public Affairs

Collins Lewis, M.D.

STAFF*Executive Director*

Rebecca Defilippo, MS, MBA, CMP

Governmental Consultant

Richard "Mo" McCullough

Elected EMPS Officers Announced at Annual Meeting

EMPS held the election for officers of its executive council earlier in the year with 76 members (23.7%) sending in ballots, by the April 4th deadline. Officers elected began their terms following the APA annual meeting, on May 8th 2008. Daniel Mamah, MD, MPE was elected President and Jack Croughan as President-Elect for two years. Dr. Mamah will serve as President until May 2010, after which Dr. Croughan will serve as President until May 2012. Susan Minchin, MD, PhD was chosen as the secretary-treasurer by the membership also for two years. Garry Vickar, MD and Lawrence Kuhn, MD became the EMPS representative and deputy-representative respectively to the APA Assembly, for three-year terms.

Dr. Daniel Mamah is Instructor in the Department of Psychiatry at Washington University Medical School, where he has clinical, research and teaching responsibilities. Dr. Mamah received his psychiatric and masters in psychiatric epidemiology (MPE) training at Washington University. He completed his medical education at

Semmelweis University in Budapest, Hungary, after attending Federal Government College in Port Harcourt,

Nigeria. Dr. Mamah also sees patients through Midwest Psychiatry, the clinical arm of Independence Center, and SPOT (Supporting Positive Opportunities for Teens), a multi-disciplinary center for youth at risk for social problems and HIV. His current research includes structural neuroimaging in schizophrenia spectrum disorders and bipolar disorder, and clinical evaluation of antipsychotic effects in schizophrenia. Dr. Mamah has previously been a member of the Board of Trustees of the APA, and Secretary/Treasurer of EMPS. He is currently serving on the



Outgoing EMPS President Jack Croughan, MD (left) hands over the ceremonial gavel to newly elected President Daniel Mamah, MD at the 2008 EMPS annual meeting.

APA's Council on Quality Care, and on the DSM-V Task Force.

Dr. Jack Croughan, has been in private practice in Brentwood since 1982, and is the Medical Director for Missouri Physician's Health Program, the assistance program for impaired physi-

continued on page 4.

Access to Care Strategy Session Held in Missouri

By Daniel Mamah MD, MPE

In mid-July, psychiatrists from across Missouri met in Jefferson City to discuss ways to improve access to psychiatric care.

The strategic planning meeting held Saturday, July 19, at the Capitol Plaza Hotel, was the first in a series of statewide discussions to address access issues, especially in rural areas, and develop a cohesive plan to evaluate proposed legislation in the 2009 Missouri General Assembly. The three American Psychiatric Association (APA) district branches (DBs) in Missouri sponsored the meeting, Central Missouri Psychiatric Society (CMPS), Eastern Missouri Psychiatric Society (EMPS), and Western Missouri Psychiatric Society (WMPS).

During the morning session, speakers outlined some of the challenges that affect the delivery and availability of psychiatric services in metropolitan, suburban and rural communities. A working lunch and afternoon breakout session focused on potential ways to improve access problems.

Twenty-one people, including seven speakers, attended the full-day meeting. WMPS member James R. "Bob" Batterson, MD, legislative representative to the APA Area 4 Council, served as moderator. Other attendees from the Western

Missouri DB were Lori Breedlove, MD; Robert Sarrazin, MD; and James Wolfson, MD, with WMPS President James Fleming, MD participating by conference call.

Attendees from EMPS included Executive Council members Jack L. Croughan, MD; Daniel T. Mamah, MD, MPE; Jo-Ellyn M. Ryall, MD; and Paul Simon, DO. David Berland, MD; Dehra Glueck, MD; Eugene Rubin, MD, PhD and Melissa West, MD also attended from St. Louis.

S. Arshad Husain, MD and Joe Parks, MD attended from Central Missouri. Governmental Consultant Richard "Mo" McCullough, who represents the legislative interests of all psychiatrists in Missouri, also attended as did the executive directors from each district branch, Sherry Cass (CMPS), Rebecca DeFilippo (EMPS) and Jill Watson (WMPS).

Joe Parks, MD, director of the Division of Comprehensive Psychiatric Services, reviewed state funded resources and critical needs. Per capita psychiatric hours doubled in the last ten years, Dr. Parks said, but a demand still exists for more hours, with particularly keen shortages in child psychiatry, inpatient settings and forensic units. General hospitals continue to shutter

continued on page 6.



Elections & Annual Meeting

continued from page 3

cians. He is a graduate of Kansas University Medical School and the Washington University psychiatry training program. Dr. Croughan has served on the EMPS as Chair of the Legislative Committee, and most recently as President.

Dr. Susan Minchin currently is in private practices in general, forensic and geriatric psychiatry, and is affiliated with Barnes-Jewish Hospital. Dr. Minchin received psychiatry training at Washington University, and both her MD and PhD degrees from the University of Iowa. This was followed by a post-doctor fellowship in neuroscience at Washington University and a

geriatric psychiatry fellowship from St. Louis University.

Dr. Garry Vickar was re-elected as APA Assembly Representative. Dr. Vickar is Chair of the Department of Psychiatry at Christian Hospital Northeast in St. Louis. He has also served EMPS in the past as President, and as Vice-President of the St. Louis Metropolitan Medical Society. Dr. Vickar is a graduate of Washington University psychiatry residency program. He is also Professor and Clinical Chair, Dept. of Psychiatry at St. Matthews University, Grand Cayman, British West Indies.

Dr. Lawrence Kuhn is medical director and Chair of Psychiatry at DePaul Health Center in Bridgeton, Missouri. He received his medical and psychiatric

training at the Loyola University medical center in Illinois. Dr. Kuhn has served EMPS as President and is also chair of its Ethics Committee.

Newly elected officers were announced at the EMPS annual meeting on April 15th, 2008. The annual meeting was held at the Independence Center, a psychosocial rehabilitation center in St. Louis. The meeting included a tour of the facility, as well as two CME lectures. The featured speaker was Nada Stotland, MD, current APA President, who spoke about the "Abortion Trauma Syndrome". Other speakers included Collins Lewis, MD, from Washington University Department of Psychiatry, who spoke about "Psychosocial Rehabilitation". Dr. Lewis is also on the Board of Directors of the Independence Center.

Pictures from the 2008 EMPS Annual Meeting



APA President, Nada Stotland, MD
Giving the Keynote Talk



Collins Lewis, MD, speaking on
"Psychosocial Rehabilitation"



Psychiatric Advocacy Day at the Missouri Capitol

By Rebecca DeFilippo, CMP, EMPS Executive Director

On March 12, psychiatrists in Missouri attended an advocacy and media relations training program. The three Missouri district branches hosted the event, under the auspices of the Missouri Psychiatric Society.

Held at the Capitol Plaza Hotel in Jefferson City, the program's morning session included talks on Missouri government and the legislative process, grassroots advocacy, media relations, and member-to-member advocacy. Following lunch, attendees traveled uphill to the state Capitol building to visit with their legislators and discuss pending bills.

Speakers included APA State Legislative Field Representative Bob Kearley, APA Communications Specialist Rhondalee Dean-Royce, EMPS Executive Council members Jo-Ellyn M. Ryall, MD and Paul B. Simon, DO, and EMPS Governmental Consultant Richard "Mo" McCullough.

Participants from EMPS also included Jack L. Croughan MD; Daniel T. Mamah MD, MPE; and Melissa West, MD. Western Missouri attendees included James R. "Bob" Batterson, MD; Lori R. Breedlove, MD; Jeremy Burd, MD; Subbu J. Sarma MD; Robert Sarrazin MD; and James K. Wolfson, MD. No members attended from the Central Missouri DB. Western Missouri and EMPS Executive Directors Jill Watson and Rebecca DeFilippo CMP, respectively, also attended.

A major advantage to being in Jefferson City on this particular Wednesday was the opportunity for several psychiatrists to meet with a small contingent of psychologists in Senator Jack Goodman's office. Concerned about opposition from the medical profession to Senate Bill 917, Sen. Goodman (R-29) the bill's sponsor from Mount Vernon, sought compromise on certain provisions to create licensing requirements for prescribing psychologists. The meeting ended when the psychologists rejected suggestions to attend medical school or, at the very least, undergo training as advance practice nurses, who have prescriptive authority under physician supervision in the state. Sen. Goodman did not attend the meeting.

Eli Lilly and Company provided an unrestricted educational grant in support of the program, which offered attendees up to 4 PRA AMA Category 1 credits.



The Missouri Capitol Building in Jefferson City



Robert Sarrazin, MD and Lori Breedlove MD, both members of Western Missouri Psychiatric Society, at the Missouri Capitol.



Daniel Mamah, MD with Rep. Robin Wright-Jones (district 63) at her office in the Missouri Capitol



Outside the Capitol Plaza Hotel in Jefferson City, MO, where strategic seminars and advocacy training was held for Missouri psychiatrists



Daniel Mamah, MD with Senator Maida Coleman, who is also the minority floor leader

2008 "Best Psychiatrists" Named

By Rebecca DeFilippo, EMPS Executive Director

A local magazine has released its annual list of the best doctors in the greater St. Louis metropolitan area.

Of the 903 doctors across 67 specialties named as members of the 2008 St. Louis class of star physicians, 26 of the more than 30 psychiatric physicians are APA/EMPS members, according to results published in August by St. Louis Magazine.

The public does not nominate candidates to the "Best Doctors" list. Other doctors do. Best Doctors, Inc., a company founded by doctors affiliated with the Harvard Medical School, contacts physicians in the St. Louis region who have been included on a previous Best Doctors list, according to St. Louis Magazine. The doctors respond to this question: "If you or a loved one needed a doctor in

your specialty, to whom would you refer them?"

Named to the 2008 list are the following members: Charles R. Conway, MD; Alan R. Felthous, MD; Cynthia A. Florin, MD; Keith S. Garcia, MD; Eduardo L. Garcia-Ferrer, MD; Luis Giuffra, MD; George T. Grossberg, MD; Duane Q. Hagen, MD; Barry A. Hiatt, MD; Linda S. Horne, MD; William M. Irvin Jr., MD; Michael R. Jarvis, MD; Saad Zia Khan, MD; Hilary K. Klein, MD; Jerold J. Kreisman, MD; Kimberli Etta McCallum, MD; Eric J. Nuetzel, MD; Becky A. Pew, MD; Andrew Trice Pickens III, MD; Elizabeth F. Pribor, MD; John S. Rabun Jr., MD; Diane Rankin, MD; Jo-Ellyn M. Ryall, MD; Adam J. Sky, MD; Andrea M. Wilson, MD; and Charles F. Zorumski, MD.

Access to Care

continued from page 3

inpatient psychiatric units and the state mental health department now supplies about 50 percent of inpatient psychiatric bed days, compared with 35 percent in previous years. Dr. Parks believes a major challenge is the low Medicaid reimbursement rate for psychiatric visits. In addition, despite a growing U.S. population, the number of training slots has not changed significantly.

"The current care delivery model is not sustainable and the state cannot depend solely on psychiatrists alone with the current trends," Dr. Parks said. "The hours just don't add up."

Dr. Parks suggested several possible strategies to improve access to care. One idea is to reduce workforce shortages by increasing training slots. Another is to develop innovative approaches to interest more students in psychiatry at the college and medical school levels. Boosting reimbursement rates also will help. In addition, he encouraged psychiatrists to co-locate within community health centers and primary care offices, noting that general medical problems are the major cause of death and morbidity in psychiatric patients.

He also suggested enhancing the availability of Telepsychiatry services, especially in rural areas. The state currently funds Telepsychiatry programs in three mental health centers. A service that allows treatment to occur without either the psychiatrist or the patient having to travel long distances shows great promise, but he acknowledged there have been challenges implementing the program in less populated areas. Despite some of the obstacles, Dr. Parks considers granting psychologists prescribing privileges a poor solution and, he noted, the Department of Mental Health strongly opposes such legislation.

"In Louisiana and New Mexico, where such bills have passed, access has not improved in underserved areas," Dr. Parks said.

E. Rachel Mutrux described the teleconferencing capabilities of the Missouri Telehealth Network (MTN), which she heads. Based at the University of Missouri in Columbia, the program facilitates care for rural, underserved patients. To date, MTN has conducted more than 16,000 interactive video encounters in 20 specialties. More than 60 percent of the 2,475 telemedicine patient visits conducted through the state network last year was for mental health purposes. Today, the network operates at over 137 sites in 48 counties.

Ms. Mutrux said the average cost to connect to the network is approximately \$10,000 per year, primarily for T1 lines and computer equipment. T1 lines offer high-speed Internet connections over secure networks, especially essential when transmitting sensitive personal data. Depending on location and T1 provider avail-

continued on page 10

Baby Sibling Study Seeks Volunteers!

Dr. Kelly Botteron is conducting a study to increase understanding of how the brain develops and to look for abnormal patterns of brain growth and development, which may lead to early detection and intervention for those affected by autism.

Who is Needed?

1. Families with a child with an autism diagnosis and a baby sibling (birth to 12 months)
2. Families with a typically developing child and a baby sibling (birth to 6 months)

Family participation is expected to last 3 years. There will be 6 to 12 visits to the study lab. Participation will include interviews, questionnaires, developmental testing and MRI scans of infant sibling (during natural sleep). Families who qualify will receive financial compensation and feedback from completed assessments. For more information visit <http://infantsibs-stlouis.org> or call Lisa Flake at 888-845-6786.

Washington
University in St. Louis
School of Medicine



The Case for Forming a Political Action Committee (PAC)

By Paul Simon, DO, EMPS Legislative Committee Chair

The three APA district branches of Missouri: EMPS, Western Missouri Psychiatric Society and Central Missouri Psychiatric Society have begun discussions to form a Political Action Committee (PAC), the Missouri Psychiatric Physicians PAC (MOPPPAC). This is largely in response to the significantly increased political pressure to pass prescription authority legislation (RxP). Missouri psychiatrists that have agreed to become provisional board members are Arshad Husain MD from Columbia, Bob Batterson MD from Kansas City, and Paul Simon DO from St. Louis.

Though RxP has been promoted in Missouri in the past, the effort has intensified. Psychologists in support of RxP have recently decided that Missouri should be a "target state". Several

national organizations of psychologists have begun pouring hundreds of thousands of dollars into Missouri to pass RxP legislation. This likely influenced RxP to be approved by both the Missouri House and Senate committees in early 2008, and its progress in the legislative process. This unprecedented success of RxP occurred despite strong efforts from the APA, Missouri State Medical Association and other organizations.

Many psychologists believe that Missouri is likely to pass RxP for several reasons. These include strong support for RxP from the Springfield area advocates, including the Forest Institute of Professional Psychology. Other reasons may include the fact that there are a fairly large number of psychologists in Missouri, a divided psychiatric community without a PAC, and many rural areas without easy access to psychiatrists.

While the most pressing reason for our PAC may be RxP legislation, there are many other reasons to have a PAC. Having a PAC will increase the effectiveness of all our legislative advocacy efforts. Current advocacy priorities include increasing access to mental health care in underserved areas and improving the incentive structure for mental health services. We also hope to expand our current efforts to educate legislators about mental health issues. General EMPS funds currently support a professional lobbyist as well as educational efforts directed towards legislators. However, these funds cannot directly support legislators.

APA membership dues cannot be used for direct political contributions; this is done through the APA's PAC. This national "APA-PAC" however is not allowed to fund state PACs. Therefore, donations would potentially have to be made specifically to the PAC by checking an optional box on the APA membership renewal forms, or through direct contributions. The funds would not only be used to fight RxP but to advocate for increased access in rural areas, parity, and other mental health issues. Anyone would be able to donate to a psychiatric state PAC including friends, associates etc. In contrast with APA dues however, contributions to MOPPPAC would not be tax-deductable.

If you have any questions about the forming of a state PAC, please contact Paul Simon, DO by email: (PS13_99@yahoo.com).



Anorexia Nervosa Study Seeks Participants

Do you have underweight adolescent patients who are preoccupied with food or weight?

These patients may be eligible to take part in a **National Institutes of Health sponsored Washington University Research Study for Adolescents with Anorexia Nervosa and their families**, evaluating two types of family treatment for anorexia nervosa, combined with either fluoxetine (Prozac) or placebo (inactive medication).

If your patient agrees to participate, all of the patient's family members currently living in the same household will complete 9 months of family therapy focused on treating the adolescent with anorexia nervosa. The adolescent will also take an active or inactive medication for 15 months under close supervision of a study physician to monitor your patient's safety. The family will be asked to completed interview and questionnaire assessments on eating habits and current or past psychological difficulties periodically throughout the study and one year after completion of the study.

Your patient may qualify to participate in the study if she or he:

- Is 12-18 years of age
- Has anorexia nervosa
- Lives at home

PARTICIPATION IN THE STUDY IS COMPLETELY VOLUNTARY. THERE IS NO COST FOR FAMILY THERAPY TREATMENT, MEDICATION, OR MEDICAL MONITORING.

To refer patients or for more information, please call Emily White at (314) 286-0076 or email whitem@psychiatry.wustl.edu.

Study Director: Denise E. Wilfley, Ph.D.
Washington University School of Medicine
Department of Psychiatry
660 S. Euclid, St. Louis, MO 63110



MASTER OF PSYCHIATRIC EPIDEMIOLOGY PROGRAM (MPE): The MPE Program, offered by the Epidemiology and Prevention Research Group in the Department of Psychiatry at Washington University Medical School, was established in 1989 by Lee Robins, Ph.D., and is the first and only program of its kind in the world. This program offers fundamental epidemiological and research skills, with an emphasis on interdisciplinary studies within a medical school environment. The program is noted for its public health focus, as it encompasses prevention, treatment and intervention research. It also strongly emphasizes training in the responsible conduct of science.

Candidates develop practical research skills and learn basic epidemiological methods that can be applied to many disciplines. They study the history and development of the major national and international psychiatric epidemiology studies, and they become familiar with diagnostic instruments commonly used in the field. Students learn how to organize and manage population surveys, including design, data collection and data analysis. Instructors in the program are experienced research investigators, with productive research teams.

Students come from varied backgrounds such as public health, social work, engineering, nursing, mathematics, psychology and anthropology. The overall objective of the MPE Program is to prepare pre-doctoral students and post-doctoral fellows for a productive research career in epidemiology, with an emphasis on behavioral risk factors. Graduate students in other University programs are also encouraged to enroll in courses. Undergraduate students are welcome, with the instructor's approval.

RESEARCH OPPORTUNITIES: Students have the opportunity to work with any one of the faculty mentors participating in the MPE Program. To learn more, please visit our website at: [<http://epi.wustl.edu/mpe/index.htm>]

TO APPLY: Please forward a curriculum vitae, statement of research interests, transcripts, two letters of reference, GRE scores and the application found online to: Erin Murdock, Registrar for the MPE Program, Washington University School of Medicine, 40 N. Kingshighway, Suite 4, St. Louis, MO, 63108. Application materials can also be e-mailed to murdockel@epi.wustl.edu.



POSTDOCTORAL POSITIONS IN DRUG ABUSE RESEARCH, WASHINGTON UNIVERSITY SCHOOL OF MEDICINE: Washington University announces the availability of a Post-doctoral research fellowship with the Epidemiology and Prevention Research Group. The fellowship is with Dr. Linda Cottler's NIDA T32 Training Program in Drug Abuse Epidemiology, Services and Prevention Research. The Program provides outstanding training for fellows in epidemiology research with an emphasis on interdisciplinary studies. The NIDA T32 Training Program, established in 1999, offers two to three years of postdoctoral training at Washington University School of Medicine, which ranks 3rd in NIH funding, and has a rich, 117-year history of success in research, education and patient care. The Program is noted for its public health focus, encompassing prevention and intervention studies with high risk populations, prescription drug abuse and veteran samples. It also strongly emphasizes training in the responsible conduct of science and community-based research.

An apprenticeship model is blended with didactic teaching to train fellows to form writing groups, write papers, review manuscripts for publication, teach, and participate in research. In addition, fellows have a unique opportunity to earn the Master of Psychiatric Epidemiology (MPE) through Washington University School of Medicine as part of training.

RESEARCH OPPORTUNITIES: Fellows have the opportunity to work with any one of the twenty-four mentors participating in the Program. To learn more, please visit our website at: [<http://epi.wustl.edu/epi/fellowships/nida.htm>]

TO APPLY: Please forward a curriculum vitae, statement of research interests, three letters of reference, and the application found online to: Erin Murdock, Training Coordinator, Washington University School of Medicine, 40 N. Kingshighway, Suite 4, St. Louis, MO, 63108. Application materials can also be e-mailed to murdockel@epi.wustl.edu.

New & Outgoing Residents/Fellows (July, 2008)



Saint Louis University

New Psychiatry Residents

- * Mallikaujun Badiger, MD (*Karnataka Inst. Medical Science, India*)
- * German Corso, MD (*Pontifica Univ Javeriana, Columbia*)
- * Nezar El-Ruwie, MD (*Al-Arab Univ, Libya*)
- * Adebowale Mofikoya, MD (*University of Jos, Nigeria*)
- * Moses Tabe Ambilichu, MD (*University Di Perugia, Italy*)
- * Rodney Yarnal, MD (*Univ of Missouri, Columbia, MO*)

Columbia, MO

Outgoing Psychiatry Residents

- * Jennifer Chaffin, MD (*Forensic Psychiatry, California*)
- * Deepali Chand, MD (*Psychiatry, VA*)
- * Mehret Gebretsadik MD (*unknown*)
- * Sundeep Jayaprabhu, MD (*Psychiatry VA, emergency room*)
- * Anna Jurec, MD (*Eating Disorders*)

New Geriatric Psychiatry Fellows

- * Syed Akhter, MD (*Meharry Medical*

College)

- * Pooja Sharma, MD (*Lokmanya Tilak Municipal College*)

Outgoing Geriatric Psychiatry Fellows

- * Arshad Bhatt, MD (*Full-time faculty, SLU*)
- * William Redden, MD (*PGY6 at SLU, focusing on research in minority & homeless elderly*)
- * Syed Rizvi, MD (*plans to join staff at Jefferson Barracks VA hospital*)



Washington University

New Psychiatry Residents

- * Oladimeji Alade, DO (*UMDNJ*)
- * Marcie Beth Epstein, MD (*Univ of MO, Kansas City School of Med*)
- * Delaina Marie Jewkes, MD (*Loma Linda Univ, School of Med*)
- * Courtney Johnson, MD (*Univ of Tennessee School of Med*)
- * Sudha Mogali, MD (*Meharry Med College*)
- * Marcie Orlowski, MD (*Univ Kansas*)
- * Vasileios Panagopoulos, MD (*University of Patras*)
- * Ujjwal Ramtekkar, MD (*Government Medical College, Nagpur*)
- * John Rudersdorf, MD (*Creighton Univ*)
- * Jillian Lankford, MD (*PGY-2; Michigan State Univ; Transfer from Wash U OB/GYN Program*)
- * Sarah Hartz, MD (*PGY-4; Iowa Carver College of Medicine*)

- * Ottavio Vitolo, MD (*Neuro-psychiatry Fellowship, Harvard, MA*)

- * Matthew Wilson, MD (*Clinical Practice, St. Louis*)

- * Cynthia Rogers, MD (*Child Fellowship, Wash University*)

- * Rekha Ramanuja, MD (*Child Fellowship, Wash University*)

- * Elisabeth Woods, MD (*Child Fellowship, Univ Wisconsin, Madison*)

New Child & Adolescent Psychiatry Fellows

- * Jaime Hook, MD (*SLU School of Medicine*)

- * Rekha Ramanuja, MD (*SLU School of Medicine*)

- * Cynthia Rogers, MD (*Wash U School of Medicine*)

- * Nazmul Talukdar, MD (*Dakha Medical College, Bangladesh*)

Outgoing Child & Adolescent Psychiatry Fellows

- * Meg Corrigan, MD (*BJC Behavioral Health*)

- * Arif Mirza, MD (*Community mental health center, Arkansas*)

- * Petra Lipsmeyer, MD (*moving to Orlando, Florida*)

SAVE THE DATE
FRIDAY, NOVEMBER 21, 2008



THE CONTE SEMINAR SERIES PRESENTS:

CREATING HEALTHY LIFESTYLES FOR PEOPLE LIVING WITH MENTAL ILLNESS

8 AM - NOON

ERIC P. NEWMAN EDUCATION CENTER
320 SOUTH EUCLID - ST. LOUIS, MO 63110

KEYNOTE SPEAKER: JOHN NEWCOMER, MD

NO CHARGE & OPEN TO THE PUBLIC

FOR MORE INFORMATION, CONTACT JUANITA AT 314-877-0756

WWW.CONTE.WUSTL.EDU

CEU'S AVAILABLE

Washington University in St. Louis
SCHOOL OF MEDICINE

Outgoing Psychiatry Residents

- * Scott Cologne, MD (*Sleep Medicine Fellowship, Thomas Jefferson, PA*)
- * Sandra Duarte-Sckell, MD (*C&L Fellowship, Yale, CT*)
- * Samuel Huber, MD (*Research Fellowship in Healthcare Quality, Dartmouth, VA*)
- * Nichols Nguyen, MD (*Staff at Metropolitan Psych Center, St. Louis*)
- * Tony Thrasher, DO (*Outpatient Clinic - Healthcare for the Homeless - Milwaukee, WI*)

Access to Care

continued from page 6

ability, Ms. Mutrux said the service can range anywhere from \$350 to \$1,200 monthly. One advantage is that federal, state and institutional dollars can help fund the network.

Dehra Glueck, MD, CEO of Adapt Psychiatric Services, in Ballwin, discussed Telepsychiatry as a private practice option for psychiatrists. Like MTN, Adapt also utilizes T1 lines to create a fully integrated system of mental health care delivery in underserved areas. A child psychiatrist who recently moved to Missouri, Dr. Glueck sees patients in

Arizona and Texas from the convenience of her home. Adapt contracts directly with clinics for services that are insurance-funded and instant messaging permits real-time consults with other doctors in the practice. Telepsychiatry services generally are more expensive to operate than face-to-face clinical encounters because of the technological costs, she said.

EMPS Legislative Committee Chair Paul Simon, DO discussed forming a political action committee, or PAC, to represent the interests of psychiatrists in Missouri. The APA and many of its district branches and state associations have PACs. Member contributions help

support efforts to pass and/or defeat legislation.

Over a working lunch and then into the afternoon, attendees discussed potential strategies to improve access to psychiatric care. Proposals included legislative measures to fund additional Telepsychiatry sites, higher reimbursement rates, and tax incentives for psychiatrists who agree to work in underserved communities. Another proposal was to provide primary care physicians and other health care professionals with comprehensive educational programs on how to manage various aspects of psychiatric care. This eventually could lead to mandating some level of psychiatric education as part of a continuing medical education requirement for primary care physicians.

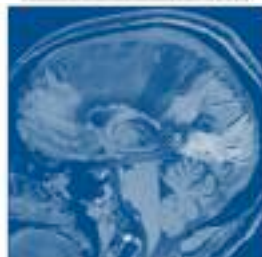
An additional option was a demonstration project to develop a collaborative care model to facilitate psychiatric consultations between psychiatrists and primary care physicians, initially, perhaps, on a pro bono basis. Several attendees volunteered to identify specific regions in Missouri where psychiatric services are in critical need as well as underserved clinics, physicians and medical organizations that would be willing to participate in the project. It eventually could include Telepsychiatry services.

Forming a psychiatry PAC reached definite consensus. Each of the three Missouri district branches would have to approve the proposal either by a vote of their respective Executive Councils or at general membership meetings.

A dialogue, the first in a series of statewide discussions, has begun to improve psychiatric access in the state. Attendees participated in a follow-up conference call on August 18, with another call planned at Noon on September 8. We encourage all interested psychiatrists in the state to participate in these ongoing discussions. Please contact Rebecca DeFilippo at (636) 343-8555 or RDefilippo@aol.com for information about the conference call.

Bipolar Disorder Imaging Study

Volunteers are needed who have a diagnosis of Bipolar I Disorder and are between the ages of 18 and 30



The goal of the study is to use computerized imaging methods to evaluate gray and white matter structure in the brain of bipolar patients and healthy controls

Participation will involve a no-cost MRI scan, plus 6-8 hours of interviews and cognitive testing. Participants in the study will not need to change their current treatments. Every participant will be compensated for their time.

 **Washington**
University in St. Louis
SCHOOL OF MEDICINE

For further information, please call:

(314) 286-1707

PI: Daniel Mamah, MD, MPE

Psychologist Prescribing Bills

continued from page 1

Governmental Affairs and Elections Committee. Her testimony stressed patient safety and the lack of medical education and training required for those seeking to become prescribing psychologists.

"Codifying a substandard level of care as legally acceptable in Missouri...demeans the patients it is supposed to reach and places them in substantial risk," Dr. Robinowitz stated.

She also emphasized that diagnosing illness and prescribing medication to treat it is based on a medical model of care, not on a psychological construct.

"This demands full-time, thorough, medical education and training in order to practice safely and effectively," Dr. Robinowitz testified. "To propose crash-course, shortcut training based on ever more vague standards and requirements is an insult to persons who need treatment for mental illness, including substance abuse disorders."

Jack L. Croughan MD, then-President of the Eastern Missouri Psychiatric Society, and EMPS Legislative Affairs Chair Paul B. Simon DO also testified at the Senate Committee hearing. Dr. Croughan said the "poorly conceived bill is bad

medicine" and a risky attempt to address patient access-to-care issues.

Dr. Croughan also described the education and training requirements for psychiatric physicians, saying that the training required in SB 917 for certification involved only a fraction of the medical school classroom hours.

"To be licensed as a physician, a person must have more than 4,000 classroom hours of medical school, and a one-year internship within a medical setting," Dr Croughan said. "In addition, psychiatrists and other specialist physicians must have at least four years of residency."

On February 28, the House Special Committee on Professional Registration and Licensing heard testimony on HB 1739. In his testimony, Dr. Croughan described some of the medical conditions that persons with mental illness have and how medications used to treat those conditions can interact with medications to treat their mental illness. He said that established educational programs such as for Nurse Practitioner or Physician Assistant programs already existed in Missouri, and included medical curriculum and training far beyond that required by the RXP bills. He described the programs as "feasible options for psychologists to obtain a medical knowledge base."

EMPS Membership Update

New Members

In June, **Karen Shields Brown MD** joined the EMPS/APA as a General Member. Eleven new Members-in-Training are psychiatry residents at Washington University in St. Louis: **Oladimeji Alade DO**, **E. Taylor Buckingham IV MD, MPH**, **Kimberly Chik MD**, **Alana P. Cox MD**, **Marcie B. Epstein MD**, **Delaina M. Jewkes MD**, **Sudha "Sue" Mogali MD**, **Marcie L. Orlowski MD**, **Vasileios Panagopoulos MD**, **Ujjwal P. Ramtekkar MD, MPE**, and **John C. Rudersdorf MD**. Three members are psychiatry residents at Saint Louis University: **German E. Corso MD**, **Adebowale Mofikoya MD**, and **Rodney E. Yarnal MD**.

Transfers In

In July, two members transferred to the EMPS from other district branches/state associations. **Manikant V. Desai MD** transferred from the Pennsylvania Psychiatric Society. **Satish Kulkarni MD**, who was most recently a member of the Indiana Psychiatric Society, returns to the EMPS as a General Member.

Transfers Out

Since January, seven members have moved away from the EMPS district branch. These are: **John G. Csernansky, MD** (Illinois Psychiatric Society), **Sandra Duarte-Sckell, MD** (Connecticut Psychiatric Society), **Ellen Lockard Edens,**

MD, MPE (Connecticut Psychiatric Society), **Minna D. Jinn-O'Leary MD** (Illinois Psychiatric Society), **Tony W. Thrasher DO** (Wisconsin Psychiatric Association), **Ottavio Valerio Vitolo MD** (Massachusetts), and **Juliet Aregbesola Glover MD** (South Carolina).

Advancements

Thirteen members advanced to General Members from Members-in-Training: **Jennifer Ann Chaffin MD**, **Deepali G. Chand MD**, **Meg M. Corrigan MD**, **Sandra Duarte-Sckell MD**, **Ellen Lockard Edens MD**, **Mehret D. Gebretsadik MD**, **Sundeeep M. Jayaprabhu MD**, **Minna D. Jinn-O'Leary MD**, **Anna M. Jurec MD**, **William M. Redden MD**, **Cynthia E. Rogers MD**, **Tony W. Thrasher DO**, and **Ottavio Valerio Vitolo MD**.

Retirements/Resignations

On May 31, General Member **Lori DeRosear DO** retired as medical director at St. Louis Psychiatric Rehabilitation Services and moved to Cape Coral, Florida. She joined the APA in 1984 and did not renew her membership upon retirement. In February, **Leonard Dumonceaux MD** retired from the practice of psychiatry and moved to Prescott Valley, Arizona. A Life Member 6, he did not retain his APA membership.

“West End Place”: Reaching out to the Newly Diagnosed

by Ryanne Tilley, Development Specialist, Independence Center

Independence Center, a psychosocial rehabilitation program based on the clubhouse model, celebrates the one-year anniversary of its new West End Place clubhouse in August. It has been a year of many changes and amazing program expansion, and one of the most exciting successes realized has been a marked increase in utilization by young adults.

One of the prevalent challenges in the mental health community is how to reach and deliver services and supports to young adults and those newly diagnosed with a severe and persistent mental illness. Because of the stigma that still surrounds mental illness and the young age of these adults, many are reluctant at best to accept they have a mental illness, much less attend a rehabilitation program with any regularity to seek assistance. Yet these are the people who need a community who understands, who need support and direction the most as they try to navigate the turbulence of diagnosis, the interruption of their education or careers, and all the challenges that come with having a mental illness.

West End Place has positioned Independence Center to reach out to these young adults in a way most mental health agencies are unable to. In contrast to the clinical or dingy settings of many mental health agencies, West End Place is 50,000 square feet of newly renovated warehouse space in the Central West End. Incorporating lofted ceilings, exposed brick, contemporary design and bright, welcoming spaces, the clubhouse mirrors any contemporary workplace or student union - it is a space where young people feel at home here,

in familiar surroundings.

In addition, West End Place is built on the technology young people - who have been raised on iPods and have ready access to computers and the latest high-tech gadgets - have come to expect. The clubhouse incorporates



high-tech copy and office equipment, WiFi hot spots, laptop computers, Smart Boards, sound systems, a video lab, and even an onsite state-of-the-art workout facility. Young members with hopes for continuing their education, pursuing their vocational goals and living active lifestyles have abundant opportunities to be engaged and feel



confident in the Center's ability to meet their needs and keep up with the changing demands in our society.

While the building's atmosphere and technology are what first attract

younger adults, it is the programs and services Independence Center offers them once they come through the doors that keep them coming back and plugged into the support system they need. The clubhouse has established a young adult committee dedicated to determining how best to support this group. Initiatives include identifying young leaders in the clubhouse and instituting a mentor program for those new to the clubhouse, creating a niche and community for young members within the clubhouse through specific work opportunities, social activities and ways to contribute to the larger clubhouse community, and building relationships with area colleges and universities to serve as a resource and also build pathways for members to more easily pursue their education.

The focus and planning dedicated to this program is producing exciting results. In the year prior to the move to the new facility, the clubhouse provided programs and services to approximately 24 adults between the ages of 18 - 25. Of that, only 43% remained active past the first 90 days. However, over the course of its first year, West End Place has enrolled more than 24 new adults between the ages of 18-25. More than 58 people in this age bracket attended the clubhouse, with more than 57 % remaining active past the 90 day mark.

And this is just the beginning. Independence Center is developing a long-range plan for addressing the unique needs of this age group, and is committed to providing a comprehensive system of activities and supports to ensure they are outreached and engaged.



Study of Schizophrenia & Schizoaffective Disorder

Volunteers are needed who:

- Are currently taking either **olanzapine (Zyprexa)**, **quetiapine (Seroquel)** or **risperidone (Risperdal)**
- Have a diagnosis of either Schizophrenia or Schizoaffective Disorder

This 24 week study is a comparison of the effect of antipsychotic medications in causing weight gain or increasing cholesterol levels. Participants will either continue taking their current antipsychotic medication or be switched to another with a low likelihood of producing weight gain or cholesterol increases.

Participants will also receive individual behavior therapy designed to help lose weight. Assistance with transportation will be available if needed.

All participants will receive financial compensation and antipsychotic medications at no cost

**Call Juanita Bishop for more information:
(314) 877-0756**

Principal Investigator: Daniel Mamah, MD, MPE
Washington University School of Medicine, Dept. of Psychiatry,
660 S. Euclid Ave, St. Louis, Missouri 63108

OBITUARIES

Suresh Chand MD, age 71, died unexpectedly January 13, 2007, after his car was swept into a creek near his home in Bonne Terre, Mo. Dr. Chand was born October 17, 1935, in Hyderabad, India. He practiced psychiatry in Missouri and Illinois for more than 30 years. He joined the APA in 1969 and was a Life Member 2 at the time of his death. Surviving are his wife, Lynda; two sons and daughters-in-law, Anil and Preeti Gupta of St. Louis and Sunil and Nilima Chand of Farmington, Mo.; a daughter and son-in-law, Deepali and Vikash Merchala of St. Louis; a daughter, Asha Chand, at home; a stepson, Leland Cagle of St. Louis; and four grandchildren, Anita and Sunita Chand and Anil and Lina Gupta.

Richard D. Todd PhD, MD, age 56, noted child psychiatrist, died Friday (Aug. 22, 2008) at Barnes-Jewish Hospital from complications of lymphoma. Dr. Todd was a professor of psychiatry and director of the Division of Child and Adolescent Psychiatry at Washington University School of Medicine. For almost 25 years, he was involved with children and adolescents who were ill or at risk for psychiatric illnesses. Dr. Todd's research focused on the genetic and environmental influences associated with childhood disorders such as attention ADHD, autism, depression and alcoholism. He and his colleagues published over 150 peer-reviewed papers. His most recent studies involved twins with attention deficit disorder. Dr. Todd was born in Oklahoma and did his undergraduate training at Vanderbilt University in Nashville. He earned a Ph.D. in biology at the University of Texas at Dallas, an M.D. at the University of Texas at San Antonio and completed his residency in psychiatry at Stanford University Medical School. He completed his child psychiatry fellowship at Washington University, Children's Hospital, in 1986. There, he also began his research, teaching and clinical practice. Dr. Todd received many of his field's most important honors, including being listed in "America's Top Doctors" since 2001 and in "Best Doctors in America" since 2002. Among the survivors are his wife of 28 years, Dr. Karen O'Malley; a son and daughter, Lucas F. Todd and Anne M. O'Malley of St. Louis; his parents, Morris S. Todd and Martha A. "Molly" Todd of Dallas and Tincup, Colo.; a brother, Robert M. Todd of Dallas; and a sister, Ruth E. Todd of Bellevue, Wash.



Richard Todd, PhD, MD



Epidemiology &
Prevention
Research
Group

COMPUTERIZED DIAGNOSTIC INTERVIEW SCHEDULE, VERSION IV (C DIS-IV): The Computerized Diagnostic Interview Schedule (C DIS) Version IV is a fully structured questionnaire designed to ascertain the presence or absence of major psychiatric disorders as outlined in the *Diagnostic and Statistical Manual of Mental Disorders* (4th ed. [DSM-IV]; American Psychiatric Association [APA], 1994). Like the earlier versions, the C DIS-IV attempts to mimic a clinical interview by using questions to determine whether psychiatric symptoms endorsed by a respondent are clinically significant and are not explained by medical conditions or substance use. The C DIS-IV is structured for use by both researchers and clinicians.

Like clinical psychiatric interviews, the DIS distinguishes significant symptoms from the ordinary worries and concerns of daily life by setting requirements for clinical significance, and distinguishes psychiatric symptoms from symptoms caused by physical illness or the side effects of drugs or alcohol.

Psychometric properties of the DIS and related instruments have been studied extensively – including test-retest reliability studies, test-comparison studies, longitudinal studies and factor analytic studies. The DIS must be administered by trained interviewers, but these interviewers do not have to be clinicians. Due to the fully specified nature of the DIS, nonclinicians may administer the DIS with adequate reliability and validity. In many situations, the expense and complication of using clinicians to interview patients is not necessary when using the DIS.

TRAINING: The training course is offered twice a year at Washington University School of Medicine in St. Louis, Missouri and is required for those using the C DIS-IV for the first time and for persons who want a refresher. License holders and their staff members or designated interviewers should participate. The next training session will be held November 10-13, 2008.

CONTACT A DIS REPRESENTATIVE TODAY: For more information, please visit our website at: [<http://epi.wustl.edu/dis/dishome.htm>]. E-mail: cdissam@epi.wustl.edu Phone: 314-286-2267.

EMPS Committee Membership & Functions

BYLAWS

Jo-Ellyn Ryall, MD

CHILD & ADOLESC. PSYCH

Meg Corrigan, MD
David Duesenberg MD
Dehra Glueck, MD
Judith McKelvey, MD
Adelita Segovia, MD
Duru Sakhrani, MD
Moisy Shopper, MD

COMMUNITY/PUBLIC PSYCH

Malik Ahmed MD
Jay Engelhart, MD
Asif Habib, MD
Chris Loynd, DO
Duru Sakhrani, MD
Melissa West, MD

ETHICS

Lawrence Kuhn, MD
Aviva Raskas, MD
Moisy Shopper, MD

LEGISLATIVE AFFAIRS

Alan Felthous, MD
Asif Habib, MD
Azfar Malik, MD
Jay Meyer, MD
Paul Simon, DO

MEMBERS-IN-TRAINING

Lauren Flynn, MD
Ben Holt, MD
Ujjwal Ramtekkar, MD, MPE
Paul Simon, DO

MEMBERSHIP

Bharat Nakra, MD
Jo-Ellyn Ryall, MD
Edwin Wolfgram, MD

NEWSLETTER

Azfar Malik, MD
Daniel Mamah, MD, MPE

PROGRAM/EDUCATION

Arturo Taca, MD

PUBLIC AFFAIRS

David Duesenberg, MD
Collins Lewis, MD
Herb Rosenbaum, MD
Angeline Stanislaus, MD

-
1. **BYLAWS**
 - Guidance to ensure that EMPS actions are consistent with that described in its Bylaws
 - Recommend necessary Bylaws changes, with involvement of EMPS general membership
 2. **CHILD & ADOLESCENT PSYCHIATRY**
 - Develop initiatives to advance child & adolescent mental health in Missouri
 - Represent child & adolescent interests in EMPS actions
 3. **COMMUNITY/PUBLIC PSYCHIATRY**
 - Develop initiatives to improve public mental health services in Missouri
 - Guidance on legislative and public affairs efforts involving public mental health in Missouri
 4. **ETHICS**
 - Investigate complaints about EMPS members, as outlined in APA guidelines
 - Guidance on ethical issues involving EMPS actions
 5. **LEGISLATIVE AFFIARS**
 - Organize legislative efforts including lobbying and reviewing/drafting relevant legislative bills
 - Guide EMPS member involvement in legislative efforts, including contacting legislators and testifying on state and federal bills
 6. **MEMBERSHIP**
 - Review APA/EMPS membership applications for approval
 - Assist EMPS members in completing APA Fellowship applications and overseeing nominations for APA Distinguished Fellowship
 - Develop and oversee EMPS member benefits
 7. **MEMBERS-IN-TRAINING**
 - Organize activities of benefit to psychiatry residents, fellows and medical students
 - Represent the interests of residents, fellows and medical students in EMPS actions
 8. **NEWSLETTER**
 - Recommend, write and gather articles for the EMPS Newsletter, Eastern Missouri Psychiatry
 - Edit articles received by the editorial committee
 9. **PROGRAMS/EDUCATION**
 - Organize and determine content of CME educational programs
 - Organize other EMPS programs (e.g. annual meetings, social functions)
 10. **PUBLIC AFFAIRS**
 - Organize public relations and media efforts to address psychiatric issues and de-stigmatize mental illness
 - Maintain working relationships with EMPS affiliates



1321 Montevale Court
Fenton, MO 63026-3016

RETURN SERVICE REQUESTED

PRSR STD
U.S. POSTAGE
PAID
St. Louis, MO
Permit No. 495

Upcoming Events:

Institute on Psychiatric Services.

Organization: American Psychiatric Association.
Date: October 2-5, 2008. *Location:* Chicago, Illinois. *Contact:* (703) 907-7377;
njohnson@psych.org

25th Annual Spirit of St. Louis Dinner & Snow

Ball. *Organization:* Mental Health America of Eastern Missouri (formerly Mental Health Association of Greater St. Louis). *Date:* December 5th, 2008 (6pm - midnight). *Location:* Hilton St. Louis at the Ballpark. *Contact:* (314) 773-1339; mhadevelopment@aol.com

2nd Annual Dancing with the St. Louis Stars.

Organization: Independence Center, St. Louis.
Date: Saturday, February 21, 2009. *Location:* Four Seasons Hotel, Downtown St. Louis.
Contact: (314) 880-5404;
lhuelmann@independencecenter.org

We strive to make content in future issues of *Eastern Missouri Psychiatry* more representative of our membership, and encourage our members participation in its creation.

For communications regarding the newsletter, or to include articles, events or advertisements in future publications contact:

***Daniel Mamah, MD, MPE,
Editor, Eastern Missouri Psychiatry,
Dept. of Psychiatry, Washington
University,
660 South Euclid Ave.,
St. Louis, Missouri 63110
or
mamahd@psychiatry.wustl.edu***